

THE PERFECT TEAT



**INGRAM'S PATENT
BAND TEAT AND VALVE**

"Agrippa"
REGD. TRADE MARK

The "Agrippa" Teat and Valve are perfectly hygienic. The Rubber has been specially prepared so as to withstand actual boiling, and does not deteriorate by frequent repetition of this boiling process.

The "Agrippa" Teat possesses a little flat cushion at the base, which gives comfort to the child when taking its food, and is the nearest copy to Nature, so far as feeding facilities are concerned.

The chief feature of the "Agrippa" Patent is the extraordinary gripping power caused by the interior band of rubber which holds on to the bottle, absolutely refusing to accidentally slip off.

The "Agrippa" Teat will fit any make of Boat-shape Feeding Bottle.

Price—Teats, 4d. each; Valves, 3d. each.

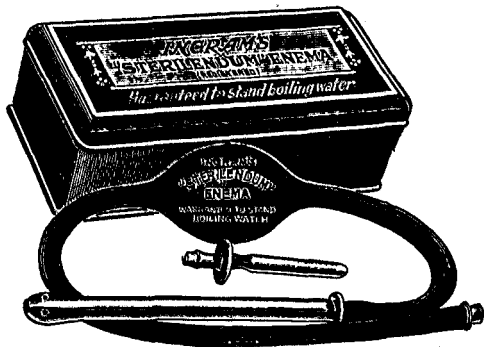
We are always pleased to send a sample of the Patent "Agrippa" Teat and Valve on receipt of professional card.

INGRAM'S SEAMLESS ENEMAS

REGISTERED TRADE MARKS

"Adaptable"	"Atalanta."
"Eclipse"	"Utilema."
"Sterilendum"	"Zenith"
"Zebina"	"Perfex"

THE "STERILENDUM" ENEMA (Regd.)



STERILIZABLE IN ITS ENTIRETY.

Fitted with Aseptic Glass Pipes and Valves.
Guaranteed not to Split. No Metal Parts.
Best Quality Rubber.

Obtainable at all High-Class Chemists.

Manufactured by INGRAM'S, London, at The London India Rubber Works, Hackney Wick, London, E.9. Makers and Inventors of the well-known Seamless Enemas and "Agrippa" Patent Band Teat and Valve, etc. Established in London in 1847



Twilfit
Regd.

CORSETS BRITISH MADE

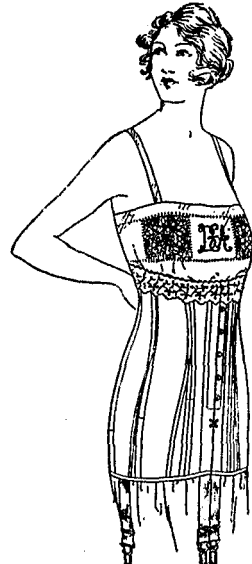
Every pair of "Twilfit" Corsets carries the maker's guarantee of absolute perfection in fit, style and wear. Purchase price refunded or corsets exchanged if not to entire satisfaction.

Reducing Model 101.—Our Special Reducing Model with patented cross supports. Fitted with Spiral Unbreakable Steels. In very strong quality Coutil, and with six Hose Supporters. Sizes 22 to 30 in.

Price, per pair **15/11**
Post Free

Sizes 31 to 36, price 17/6 per pair.

Full range of styles at all prices of all Drapers and Ladies' Outfitters.



Model 2579.—Average Figure. A Free Hip Corset, of Fine Coutil. Very low above waist-line in front, sloping to a medium-high back. Pink only. Sizes 20 to 28 in. Price, per pair **9/6**

ILLUSTRATED BOOK-LET

giving full range of Styles and Prices sent Post Free on request.



Model 2003.—Slender Figure. A Sports Corset with silk elastic at top. Specially bound to prevent tearing. Lightly boned. Short cut model in front, hips and back, and low bust. Fitted with four Suspenders. Sizes 19 to 28 in. Price, per pair **10/6**

All "Twilfit" Models are fitted with "Twilfit" Spiral Steels—Rustless and Unbreakable—exclusively a "Twilfit" feature, they are unobtainable in any other Corset.

Special West-End Distributing House—

D. H. EVANS & Co. Ltd. Oxford St. W. 1

CATALOGUE UPON APPLICATION.

Manufacturers: Chas. Leethem & Co. Arundel Factory, Portsmouth

[previous page](#)

[next page](#)